

A. Organizational Profile of SHIP Nepal

A.1 Introduction

Self Help Initiative Promotion Centre Nepal (SHIP Nepal) is a local Non-Government Organization (NGO) working in Humla district since March, 2008. SHIP-N was transferred into local NGO from USC Canada Nepal that conducted Self Help Initiative Promotion Project (1990-2007) in eight Village Development Committees (VDCs) of Humla district namely, Thehe, Bargaun, Simikot, Dandaphaya, Hepka, Khagalgaun, Syanda and Chhipra. Since last five years SHIP Nepal has been working with farming communities of Kharpunath, Lali, Raya and Sarkideu VDCs with financial and technical support from USC Canada. Since June, 2011; it has been working in five more VDCs (Muchu, Khagalgaun, Syanda, Hepka and Dandaphaya) with financial and technical support from Development Fund of Norway in the name of Humla Development Initiative (HDI project).

Contact address: Simikot – 2, Humla, Karnali Zone, Nepal; Phone: 977-870680071;

E-mail : contact@shipnepal.org.np; Website: www.shipnepal.org.np

A.2 Legal Status

SHIP Nepal is registered in Humla District Administrative Office of Mid-Western Development Region (Registration No: 148-2064/65; Date: 2064 / 12 / 03; Place: District Administrative Office, Humla district). It has also been affiliated to Social Welfare Council (Affiliation No.: Social Welfare Council No: 24804). Its PAN Number is 302862894 and its NGO Federation No is MWR-HUM-29. SHIP Nepal presently has 17 General Members (6 males and 11 Females) and its Executive Board consists of 7 persons (4 males and 3 females) including one officials representative. SHIP Nepal has promulgated the following Rules and Regulations:

- Financial & Administrative policy
- Gender policy and Strategy
- Program implementation strategy
- Code of conduct
- Security policy

A.3 Core Values

Human rights, respect and resilience are the bases for sustainable community development.

A.4 Organization Mission

Strengthen and empower the local people using local means and resources to initiate self development and self sufficiency for human right, resilience and relief in development work.

A.5 Organizational Vision

Poverty reduction through economic development and social justice.

A.6 Organizational goal

Support to Build Food and Livelihood Security in smallholder farming communities to reduce their poverty.

A.7 Objectives of the Organization

1. To empower the local communities to participate in development activities spontaneously.
2. To assist stakeholders in making economically self sustained communities by means of capital formation, mobilization and employment generation through the conservation and promotion of local knowledge, skill and expertise.
3. To enhance the living standards of the socio- economically deprived group of the communities especially the woman, indigenous communities, *dalits* and marginalized group through income generation programs.
4. To assist local communities to become agriculturally self sustained and promote food sovereignty/security by means of research, development and expansion of organic agricultural system with special emphasis on protection of indigenous knowledge, ecology and bio-diversity.
5. To assist the local communities in producing agricultural and non agricultural products and having easy access to market opportunities to sell their products.
6. To enhance awareness of local communities in various pertinent socio- economic issues and aspects

A.8 Strategy of SHIP Nepal

SHIP Nepal has adopted following strategies to implement the project activities in general and to achieve the expected outcomes in Biodiversity Conservation and Agro - Economic Security Program in particular.

- Understanding and strengthening local seed supply systems and diversification of plant genetic resources that help promoting on farm in-situ conservation and utilization of crop genetic resources that help improve and increase food and nutrition security.
- Making the farming communities aware about climate change, adaptation and mitigation and support them in identifying and exchanging local resource (climate change resistant varieties) and appropriate practices in improving soil fertility, increase in food crop and biomass productivity
- Strengthening the capacity of farmers groups, Cooperatives for value addition, rural enterprising including marketing of their farm products
- Improving health and sanitation conditions of rural farm families through awareness enhancement and other supports
- Promoting gender equality through women empowerment
- Attracting and engaging youth in farming activities and farm-based enterprises
- Promoting groups approach i.e. transforming the local communities/target groups into viable working groups
- Gender sensitive climate change sensitive and inclusive consideration in project implementation
- Emphasis on participatory planning, community based monitoring and evaluation in all project activities.

A. 9 Major working areas/ themes

1. Food / Seed Security & Nutrition
2. Agro-biodiversity Conservation and Promotion
3. Promotion of Eco Tourism
4. Rural Credit/Micro Finance Program
5. Basic Social Service
6. Promotion of Gender Equality
7. Engaging Young Farmers
8. Institutional Development

A.10 Geographic locations of SHIP Nepal

SHIP Nepal is currently working eight comparatively remote and backeard VDCs of Humla district that include 1. Dandaphaya 2. Syanda 3. Sarkideu 4 Muchu 5. Raya 6. Khagalgoun 7. Kharpunath and 8 Lali.

A.11 Target Beneficiaries of SHIP Nepal

Rural farmers including indigenous community, women, *dalits* and marginalized groups

SL. No.	VDCs	Households	Population		
			Male	Female	Total
1	Dandafaya	368	1,054	1,044	2,098
2	Syanda	337	1,026	1,010	2,036
3	Sarkideu	396	986	935	1,921
4	Muchu	231	433	483	916
5	Hepka	204	523	534	1057
6	Raya	348	961	941	1,902
7	Khagalgaun	219	521	502	1,023
8	Kharpunath	265	750	739	1,489
9	Lali	305	771	804	1,575
Total		2,673	7,025	6,992	14,017

Source: Population Census: 2011; NPC, CBS, Kathmandu, Nepal

A.12 Sectors wise major activities of SHIP Nepal

1. Food/Seed Security & Nutrition : Irrigation support, Seed supply, trainings, crop processing, Seed selection, Home garden, Green House, local manure making, PVS, PPB, promote local production
2. Agro-biodiversity Conservation and Promotion: Biodiversity registration, climate change issues, ICS distribution, Herbal promotion.
3. Promotion of Eco Tourism:_Home garden, water supply, management training, camping support, promote local product market.
4. Rural Credit Micro Finance Program: Cooperative registration/Management, group promotion, entrepreneurs development, support/promote to professional skills development training, revolving fund support

5. Basic Social Service: Micro- hydro power plant, school building, health post building, community toilet, , drinking water supply, suspension bridge, foot trail
6. Promotion of Gender Equality: Support to Chhaupadi, professional skill training, agriculture materials support, oil mill, threshing machine, solar dryer.
7. Engaging Young Farmers: Child club, youth club, school biodiversity education.
8. Institutional Development: CDC, Cooperative, Local NGO/CBOs

A.13 Areas of Major Achievements

1. Rural Credit/Micro finance Program
2. NGO Support Program
3. Health and Sanitation
4. Micro Hydro Power Constructions
5. School Building Constructions
6. Drinking Water Supply
7. Health post building construction
8. Seed improvement program
9. NTFP Program
10. Food crop production program
11. Suspension bridge construction
12. Gender Support Program

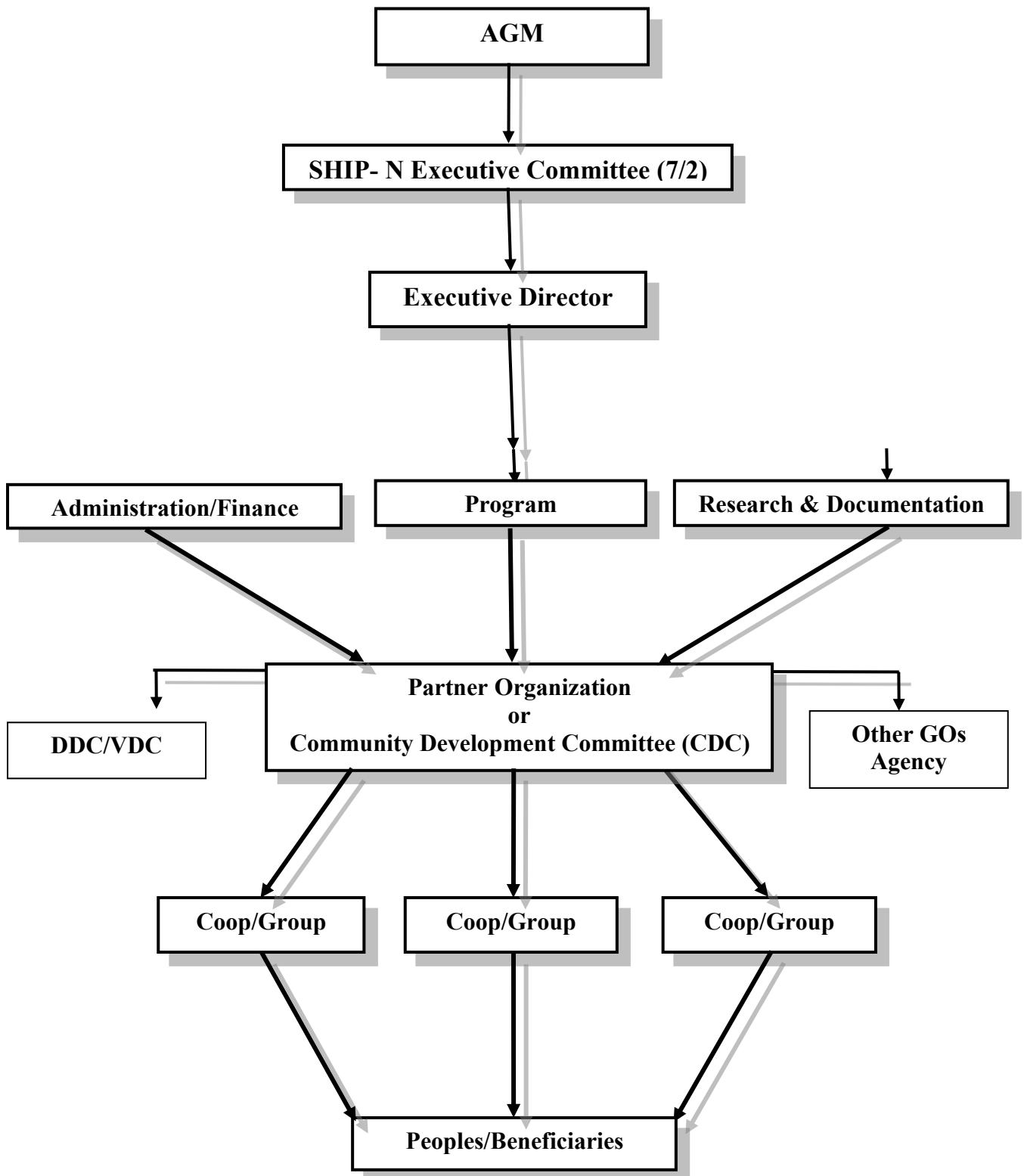
A. 14 Donors/sponsors/turnover/partnership

1. USC Canada – CIDA (NRs. 7.5 million annually)
2. D F Norway – NORAD (NRs. 9.0 million annually)
3. Annual Total Turnover: NRs. 20.0 million with local contribution
4. Partnership with UNICEF Nepal, HELVETAS /BLL,CCO, IDRC, ATA Britain

A.15 Organizational Structure



A.16 Working Modality



A.17 Human Resource

Mr. Arjun Jung Shah, Advisor, M.A. (Economics), M.S. (Agricultural Economics), over 30 years of experience in social science research and training with focus on activities related to agricultural development and food security and nutrition.

Name and Designation	Designation	Ethnicity	Service Type	Qualification	Experience (Year)
1. Anga Bahadur Lama	<i>Executive officer</i>	Ethnic	Management	Diploma in Civil Engineering	22
2. Chudamani Pokharel	<i>Finance & Administration officer</i>	Other	Management	M.A. in Social science	14
3 Santosh Kumar Jirel	<i>Agriculture program officer</i>	Ethnic	Technical/operation	Bachelor in Agriculture	14
4. Deep Narayan Joshi	<i>Program coordinator</i>	ethnic	Operation	Master degree in Geography	16
5. Kali Bahadur Bhandari	<i>Income generation supervisor</i>	Other	Technical/operation	Proficiency certificate level	19
6. Tharik Lama	<i>Assistant Finance/Adm in</i>	Ethnic	Management/operation	Bachelor in Management	4
7. Bishnu Budha	Gender Program Supervisor	Other	Technical/social mobilization	Bachelor degree in Education	7
8. Githe Aidi	Social Mobilizer	Ethnic	Technical/social mobilization	JTA Agriculture	2
9. Dharup Budhathoki	Social Mobilizer	Ethnic	Technical/social mobilization	JTA Agriculture	2

10. Jita Budha	Social Mobilizer	Ethnic	Social mobilization	Proficiency certificate level	5
11. Rekha Shahi	Social Mobilizer	Other	Social mobilization	Proficiency certificate level	2
12. Topchen Lama	Social Mobilizer	Ethnic	Social mobilization	B.A. in Education	5
13. Kangri Lama	<i>Messenger</i>	Ethnic	Operation	Literate	23
15. Kali Bahadur Rawal	<i>Messenger</i>	Chhetri	Operation	literate	5

A.18 Name of Board of Directors

- | | |
|-----------------------------------|-------------|
| 1. Mr. Jeevan Bahadur Bohara | Chairperson |
| 2. Mr. Anga Bahadur Lama | Secretary |
| 3. Mrs. Lila Kumari Malla (Shahi) | Treasurer |
| 4. Mr. Anjuk Lama | Member |
| 5. Ms. Karsangma Lama | Member |
| 6. Ms Hituk Lama | Member |
| 7. Mr. Danlal Shahi | Member |

A.19 Previous experience of SHIP in related areas

Food security, livelihood, environment and rural infrastructure supports have been the core areas of activities SHIP Nepal has so far conducted in Humla district targeting the poor, deprived and vulnerable households and women. In many instances, SHIP Nepal used and promoted food and cash transfer modalities used by Food For Work in the hill and mountain districts of Nepal.

Before SHIP Nepal was transferred into national NGOs, the following program was conducted under USC Canada Nepal

1. *Self-help Initiative Promotion Program (2001-2008)*; sponsored by Canadian CIDA through USC Canada and CCO; Targeted at 3,100 poorest of the poor households in eight VDCs of Humla District.

The project was implemented in Humla district covering 14,000 populations in eight VDCs. The activities included **food and environment security**, income generation, women empowerment, institutional development and governance. It also covered community mobilization and capacity building of the community people and local level institutions. As a result, several improvements were observed with regards to the establishment of physical facilities like drinking water supply system, micro-hydro, small irrigation system, school building, health posts, latrines etc. The project intervention also contributed to the establishment and promotion of Savings and Credit Groups, Cooperatives and several other necessities at the community level. Such facilities were created with their (target groups) own initiatives.

Since 2008 i.e. after SHIP Nepal came into existence as local Nepali NGO, mainly the following activities/projects are carried out that are relevant to the services proposed in the EOI:

2. *Biodiversity Conservation & Agro Economic Security (2008-2015)*: This program is being implemented in four VDCs (Kharpunath , Raya Sarkideu and Lali) of Humla district. The major activities of the program include Food/Seed security & Diversification, Climate Change and Diversity Conservation, Rural Credit /Micro Finance, Basic Social Services, Gender equality & Social Inclusion and others (largely Rural Infrastructure Development). This program is supported by USC Canada – CIDA with financial supports of approximately NRs. 7,500,000.
3. *Humla Development Initiative (2011-2016)*: This program is being implemented in four VDCs (Dandaphaya, Synda Khagalgoun and Muchu) of Humla district. The activities related to Food Security, Rural Credit/Micro Finance, Environment, Health & Sanitation and Local Governance are being implemented under this program. This program is being financially supported by DF Norway that amounts approximately NRs. 9,000,000.

SHIP Nepal has also conducted a number of rural infrastructure development projects in collaboration with Humla DDC, VDC and district level line agencies. Some of the relevant projects completed in the past are briefly stated below:

4. *Open Defecation Free VDC project*: The project was successful in declaring one VDC (LKharpunath) as open defecation free VDC and other four VDCs (Khangal gauon, Syanda, Lali and Sarkideo) are in the process of completion. This project is being

implemented jointly by DDC, VDCs, Ship Nepal and District Drinking Water Supply and Sanitation.

5. *Micro hydro project:* A 50 KW project is completed in Bargaoun and Thehe VDCs. Similarly, another 26 KW project is completed in Synda. These projects were undertaken in collaboration with AEPC (Alternative Energy Promotion Center), DDC, concerned VDCs and SHIP Nepal. A 28 KW micro hydro project is initiated in Khangalgaoun VDC under joint venture of AEPC (Alternative Energy Promotion Center), DDC, concerned VDCs and SHIP Nepal.
6. *Basic Rural Infrastructure Development Program:* Under this program SHIP Nepal in collaboration with DDC, concerned VDCs and line agencies has completed three suspension bridges, seven wooden bridges, seven small irrigation systems, seventeen drinking water supply schemes, two health post building with furniture facilities, two hostel building with furniture, thirteen school buildings with furniture and around three hundred toilet construction.
7. *Environment conservation and Nutrition Program:* Under this program SHIP Nepal has developed ten fruits farm. It has developed improved cooking stoves and distributed 500 such improved stoves in the SHIP Nepal program VDCs. For the off season vegetable production SHIP Nepal has developed 110 permanent green houses.
8. *Institutional supports:* SHIP Nepal has always promoted Cooperatives to work with. In this context, it has formed eight Cooperatives and provided all technical, financial and managerial supports needed by them. SHIP Nepal works in the community level largely through them.
9. *Other supports:* SHIP Nepal has distributed three oil extracting machines, four threshing machine and one rice mill in the project VDCs. These supports were made available in collaboration with the concerned VDCs.

A.20 Physical Facilities of the Organization

Facilities	Type	Quantity
Communication	Telephone	2
	Internet/website	1
	Fax/photocopy	2
Electronics	Camera	13
	Video Camera	1
	TV	2
	Power point projector	1
Engineering	As necessary	set
Office equipments	Desktop	5
	Laptops	6
	Photocopy	2
	Printer	4
	Scanner	2
	Solar	1
	Furniture	As necessary
Office Building	Rented	2
Land & Building	<i>Ropani</i>	1.25

Note:

- SHIP Nepal is an independent organization who has offered its membership from different background and from different corners of the country. None of the members of this organization is related to one other by their kinship. For instance, the chair of the organization is a local person elected from Simikot VDC of Humla district and his educated in engineering background. The secretary of the organization is an expert Engineering and a residence of Humla district. Similarly, one of the founder members of this organization is an agriculturist who is from Jiri of Dolakha district. While considering the general members, we have one gender specialist who is from Bhaktapur district. We also have an agri-environmental expert who is from Gorkha district. Similarly, one general member of our organization is educated in electrical engineering and is a residence of Palpa district. The remaining general and founder

members of the organization are from different parts of Humla district and hold different educational background.

2. SHIP Nepal is renowned as a non-governmental and non political organization. None of the members whether they are founder or general are affiliated to any political parties or directly involved in any political movement of any parties. So, it can be said that all members of this organization are socio-politically neutral.
3. Since its inception, this organization is working for establishing institutional good governance of the local communities for bringing peace, progress and real changes in Humla. It also has established its well reputation on keeping transparency and accountability of any transaction while implementing dozens of projects in Humla. It has also well documented organizational policies and strategies whether that is in institutional or program level.